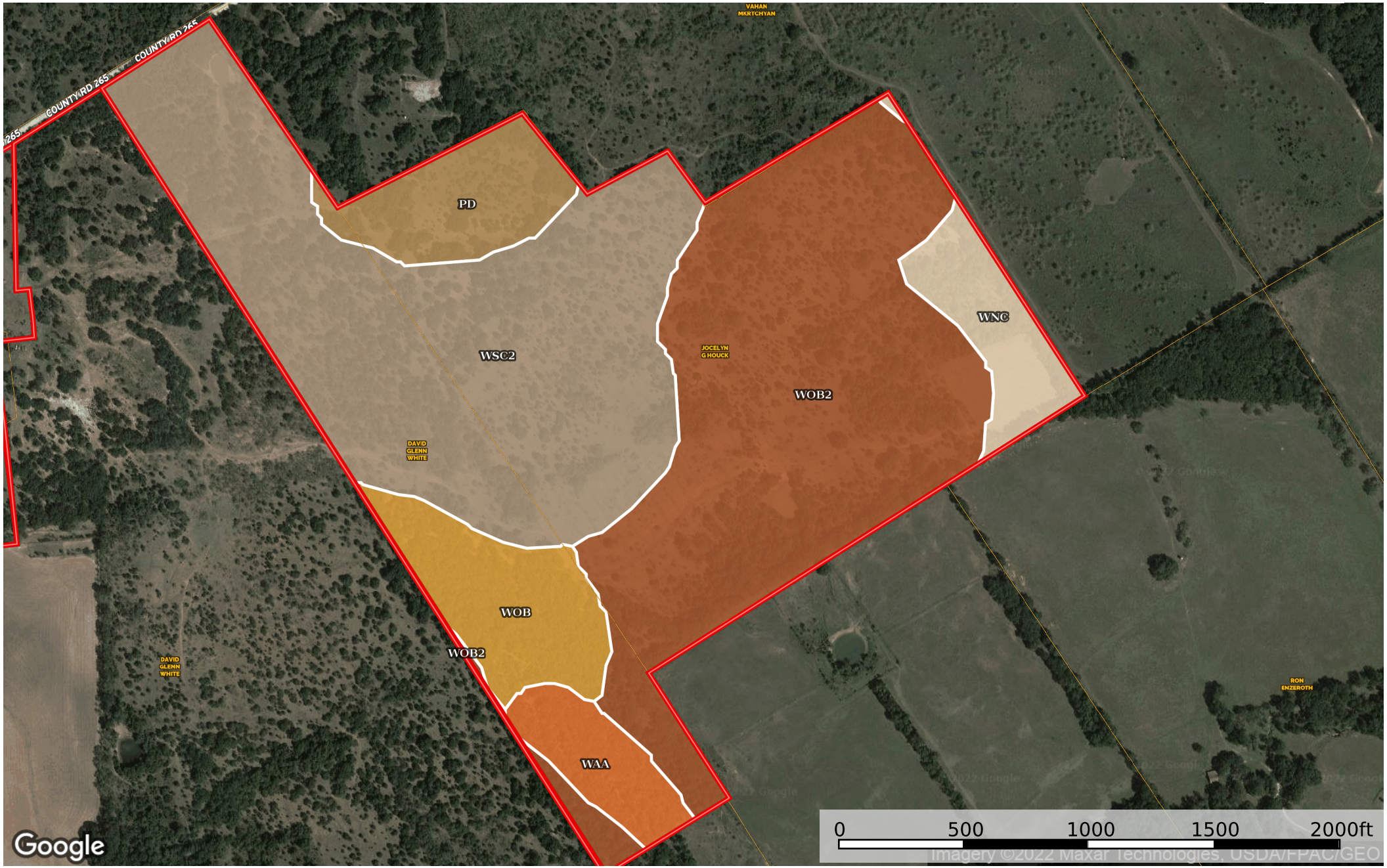


CWhite
Texas, AC +/-



Boundary

|  Boundary 132.98 ac

SOIL CODE	SOIL DESCRIPTION	ACRES	%	CPI	NCCPI	CAP
WoB2	Windthorst fine sandy loam, 1 to 5 percent slopes, eroded	51.69	38.87	0	49	3e
WsC2	Windthorst fine sandy loam, 3 to 8 percent slopes, eroded	51.53	38.75	0	48	4e
WoB	Windthorst very fine sandy loam, 1 to 3 percent slopes	9.89	7.44	0	56	2e
Pd	Purves-Dugout-Maloterre complex, 1 to 20 percent slopes	8.18	6.15	0	19	6e
WnC	Windthorst loamy fine sand, 1 to 5 percent slopes	6.55	4.93	0	51	3e
WaA	Hassee fine sandy loam, 0 to 1 percent slopes	5.14	3.87	0	31	3w
TOTALS		132.98(*)	100%	-	46.69	3.5

(*) Total acres may differ in the second decimal compared to the sum of each acreage soil. This is due to a round error because we only show the acres of each soil with two decimal.

